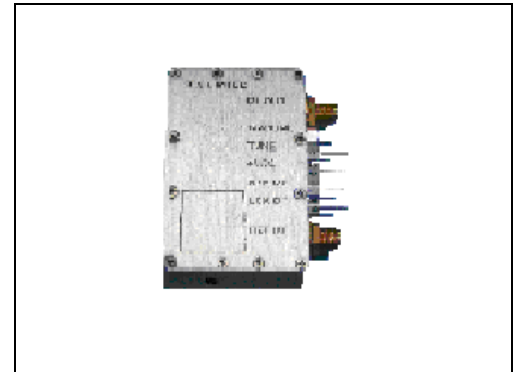


Series PT626 (5.0 ~ 100.0) MHz

- # CMOS o/p, Sine Wave o/p
- # ± 0.02 ppm
- # Good phase noise
- # RoHS Compliant



Electrical Specification

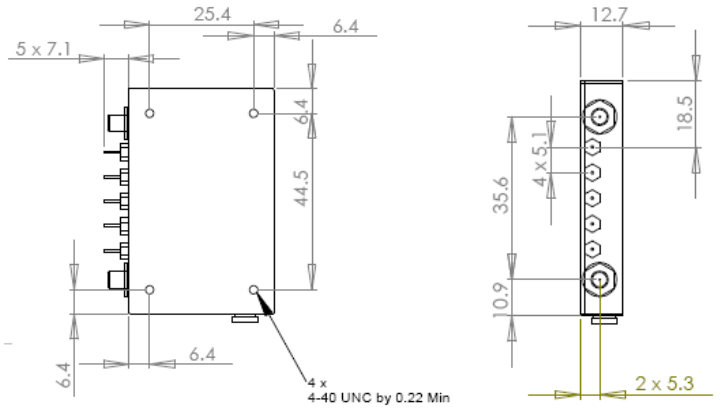
Case style	Type: PT626 (38 x 57)mm x 12.7mm (H) SMD
Frequency range	(5.0 ~ 50.0)MHz
Stability	± 0.02 ppm, temperature range dependent
against V_{cc} change	± 0.002 ppm max. $V_{cc} \pm 5\%$
against load change	± 0.002 ppm max. load $\pm 10\%$
against short term	± 0.0001 ppm max./day after 30 days continuous operation
against long term	± 0.03 ppm max./day after 30 days continuous operation
electronic trim (no reference)	± 1.0 ppm typical
Power supplies (Based on +5V unit)	
start up current	450mA max.
quiescent current	<200mA +25°C
warm up time	4 minutes max. to within ± 0.1 ppm of nominal
insulation resistance	500Meg Ω min., 100Vd.c.
Phase noise (free run)	
Single sideband	-110dBc/Hz $f_o + 10$ Hz -145dBc/Hz $f_o + 100$ Hz -150dBc/Hz $f_o + 1$ kHz -165dBc/Hz $f_o + 10$ kHz
Harmonics	-30dBc
REF power	+2dBm ± 6 dB
Voltage reference	+4.5V
Operating temperature	(-40 ~ +70)°C
Storage temperature	(-40 ~ +125)°C

Ordering Information

TFC PART NUMBER PT626 A S V2 - 50.0M
 (1) (2) (3) (4) (5)

- 1) Type: Series generic code **PT626**
- 2) Temperature tolerance and temp range
 A: $\pm 0.02\text{ppm}$ (-40 ~ +70) $^{\circ}\text{C}$
- 3) Output code: **S**: Sine wave o/p +10dBm,
- 4) Supply voltage: **V2**: +5Vd.c. **V4**: +15Vd.c
- 5) Frequency: **50.0M** = 50.0MHz,
 frequency range from (5.0 ~ 50.0)MHz

PT626 dimensions (mm)



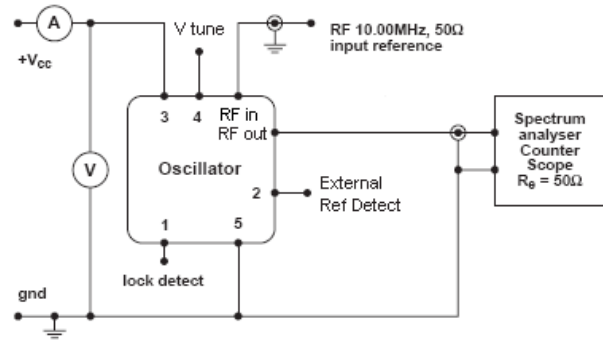
Pin connections

- #1 Lock Detect
- #2 Ext Reference Detect
- #3 +Vcc
- #4 Tune
- #5 Ground/Case

Environmental conditions:

- mechanical shock:** MIL standard 202F, method 213, condition J
- thermal shock:** MIL standard 202F, method 107, condition A
- vibration:** MIL standard 202F, method 204, condition B
- solderability:** 5 seconds max. +230°C
3 seconds max. +350°C
- RoHS:** RoHS Compliant

Test circuit:



Lock Detect Levels

CMOS

Low: No Lock
High: Locked

External Ref Detect Levels

CMOS

Low: No Reference
High: Reference detected