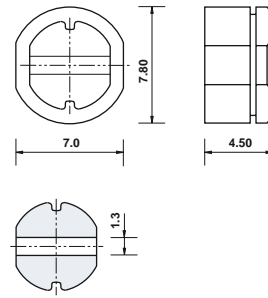


Type CDR74B (10 ~ 270) μ H

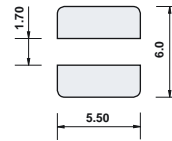
Dimensions(mm)

- # Ferrite core
- # Shielded case
- # High S.R.F.
- # smd mounting
- # Small size



Connections are tinned
Suitable for reflow or wave soldering
Connections viewed from bottom
Core material is ferrite

Suggested land pattern



The type CDR74 smd inductors provide high inductance and rated d.c. current with very small size. They are very high quality components which may be assembled using reflow or wave soldering techniques and supplied packed in bulk or on 12mm tape and reel, 1000 pieces per reel. Maximum rated current is based on a temperature rise of +40°C and a maximum inductance fall to 80% of the original value.

Electrical specification

Inductance value	(10 ~ 82) μ H at 2.52MHz (100 ~ 270) μ H at 1kHz
Core material	Ferrite
Temperature range	(-25 +70)°C
Moisture resistance	H \pm 5% max., Q \pm 10% max., relative humidity 90% ~ 95%, +40° C, 24 hours

Marking	Date code, inductance code
Insulation resistance	100M Ω min.
Voltage rating	100Vd.c.
Temperature coefficient	(0 ~ 2000)ppm/°C
Vibration	\pm 2% max. (10-55)Hz, 1.5mm displacement, three planes, duration 1 hour
Shock	\pm 2% max., three shocks of 100g, each of three planes

TFC Part No.	Inductance Code	Value	Ω d.c. max.	d.c. current Amps max.	s.r.f. min. MHz
CDR74B - 100NC	100N	10 μ H +15% -25%	0.07	1.64	29.8
CDR74B - 120NC	120N	12 μ H +15% -25%	0.08	1.50	26.4
CDR74B - 150NC	150N	15 μ H +15% -25%	0.09	1.34	21.1
CDR74B - 180NC	180N	18 μ H +15% -25%	0.11	1.22	20.0
CDR74B - 220NC	220N	22 μ H +15% -25%	0.12	1.10	19.5
CDR74B - 270NC	270N	27 μ H +15% -25%	0.17	1.00	16.5
CDR74B - 330NC	330N	33 μ H +15% -25%	0.19	0.90	15.5
CDR74B - 390NC	390N	39 μ H +15% -25%	0.21	0.83	14.4
CDR74B - 470NC	470N	47 μ H +15% -25%	0.24	0.75	12.8
CDR74B - 560NC	560N	56 μ H +15% -25%	0.32	0.69	11.6
CDR74B - 680NC	680N	68 μ H +15% -25%	0.37	0.63	10.2
CDR74B - 820NC	820N	82 μ H +15% -25%	0.40	0.57	9.95
CDR74B - 101MC	101M	100 μ H +15% -20%	0.54	0.52	8.50
CDR74B - 121MC	121M	120 μ H +15% -20%	0.62	0.47	7.53
CDR74B - 151MC	151M	150 μ H +15% -20%	0.86	0.42	7.00
CDR74B - 181MC	181M	180 μ H +15% -20%	0.97	0.38	6.53
CDR74B - 221MC	221M	220 μ H +15% -20%	1.31	0.35	5.07
CDR74B - 271MC	271M	270 μ H +15% -20%	1.46	0.31	4.67