

## Type PKB

### 1 $\mu$ H to 36milliH

- # Ferrite core
- # High Q
- # High S.R.F.
- # Radial mounting with pcb stand-off
- # Small size

PKB radial inductors provide compact high value inductance. The use of high performance ferrite material results in high Q components from 1 $\mu$ H to 36milliH. Unique lead to winding construction method provides excellent mechanical strength and the product is epoxy coated for maximum protection against humidity and may additionally be sleeved to customer order.

### Electrical specification

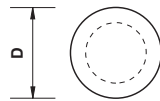
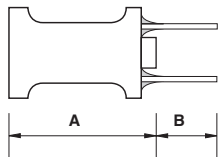
<b>Case style</b>	PKB radial
<b>Range</b>	1 $\mu$ H to 36milliH
<b>Marking</b>	Heat shrink sleeve as required or to customer order
<b>Temperature range</b>	(-20 +100) $^{\circ}$ C, based on max. ambient temp. rating at +80 $^{\circ}$ C and max. temp. rise of +20 $^{\circ}$ C during operation
<b>Temperature coefficient</b>	-350ppm/ $^{\circ}$ C max.
<b>Voltage rating</b>	250V r.m.s. max.
<b>Current rating</b>	Based on max. permissible temp. rise during operation
<b>Lead tensile strength</b>	0.5Kg min.
<b>Lead bending strength</b>	0.5Kg min.
<b>Moisture resistance</b>	$\mu$ H $\pm$ 5% max., Q $\pm$ 10% max., relative humidity 90% ~ 95%, +40 $^{\circ}$ C, 24 hours

### Standard values

#### PKB 0804, $\pm$ 5% or $\pm$ 10%

TFC Part No.	$\mu$ H @ 1kHz	Q min.	Test Freq. MHz	d.c.r. $\Omega$ max.	I d.c. max. mA (+ $^{\circ}$ C)	S.R.F. MHz min.
PKB 0804 - 101K	100	60	0.796	2.0	200	6.1
PKB 0804 - 121K	120	60	0.796	3.0	200	5.5
PKB 0804 - 151K	150	60	0.796	3.0	200	5.0
PKB 0804 - 181K	180	60	0.796	3.0	200	4.7
PKB 0804 - 221K	220	60	0.796	3.0	150	4.5
PKB 0804 - 271K	270	60	0.796	3.0	150	4.1
PKB 0804 - 331K	330	60	0.796	4.0	150	3.8
PKB 0804 - 391K	390	60	0.796	4.0	100	3.5
PKB 0804 - 471K	470	60	0.796	5.0	100	3.2
PKB 0804 - 561K	560	60	0.796	6.0	100	2.9
PKB 0804 - 681K	680	60	0.796	6.0	100	2.7
PKB 0804 - 821K	820	60	0.796	7.0	50	2.3
PKB 0804 - 102K	1,000	80	0.252	9.0	50	2.1
PKB 0804 - 122K	1,200	80	0.252	9.0	50	1.9
PKB 0804 - 152K	1,500	80	0.252	11.0	50	1.8
PKB 0804 - 182K	1,800	80	0.252	12.0	50	1.6
PKB 0804 - 222K	2,200	80	0.252	14.0	50	1.5
PKB 0804 - 272K	2,700	80	0.252	15.0	50	1.4
PKB 0804 - 332K	3,300	80	0.252	25.0	40	0.9
PKB 0804 - 392K	3,900	80	0.252	30.0	40	0.9
PKB 0804 - 472K	4,700	80	0.252	32.0	40	0.8
PKB 0804 - 562K	5,600	80	0.252	36.0	30	0.7
PKB 0804 - 682K	6,800	80	0.252	40.0	30	0.7
PKB 0804 - 822K	8,200	80	0.252	45.0	30	0.6
PKB 0804 - 103K	10,000	60	0.0796	55.0	20	0.6
PKB 0804 - 123K	12,000	60	0.0796	65.0	20	0.5
PKB 0804 - 153K	15,000	60	0.0796	80.0	20	0.5

### Dimensions(mm)



Lead diam: 0.7mm max.  
Lead pitch: (5.0  $\pm$  0.5)mm  
Sleeving: pvc

	Height A max.	Lead Length B min.	Diam. D
PKB 0804	8.9	3.0	8.0
PKB 0865	10.8	3.0	10.0
PKB 0809	14.0	3.0	12.5

**PKB 0865, ±10% or ±20%**

TFC Part No.	µH @ 1kHz	Q min.	Test Freq. MHz	d.c.r. Ω max.	I d.c. max. Amps (+°C)
PKB 0865 - 1R0M	1.0	20	7.96	0.021	8.60
PKB 0865 - 1R5M	1.5	20	7.96	0.023	7.60
PKB 0865 - 2R2M	2.2	20	7.96	0.026	6.30
PKB 0865 - 3R3M	3.3	20	7.96	0.030	5.40
PKB 0865 - 4R7M	4.7	20	7.96	0.034	4.60
PKB 0865 - 6R8M	6.8	20	7.96	0.037	4.10
PKB 0865 - 100K	10	50	2.52	0.044	3.40
PKB 0865 - 120K	12	50	2.52	0.049	3.10
PKB 0865 - 150K	15	50	2.52	0.054	2.90
PKB 0865 - 180K	18	40	2.52	0.058	2.66
PKB 0865 - 220K	22	40	2.52	0.065	2.40
PKB 0865 - 270K	27	40	2.52	0.072	2.22
PKB 0865 - 330K	33	30	2.52	0.080	2.05
PKB 0865 - 390K	39	30	2.52	0.091	1.85
PKB 0865 - 470K	47	30	2.52	0.101	1.77
PKB 0865 - 560K	56	30	2.52	0.145	1.48
PKB 0865 - 680K	68	30	2.52	0.161	1.36
PKB 0865 - 820K	82	30	2.52	0.174	1.30
PKB 0865 - 101K	100	20	0.796	0.221	1.13
PKB 0865 - 121K	120	20	0.796	0.254	1.02
PKB 0865 - 151K	150	20	0.796	0.294	0.92
PKB 0865 - 181K	180	20	0.796	0.451	0.80
PKB 0865 - 221K	220	20	0.796	0.509	0.73
PKB 0865 - 271K	270	20	0.796	0.579	0.67
PKB 0865 - 331K	330	20	0.796	0.657	0.62
PKB 0865 - 391K	390	20	0.796	0.742	0.57
PKB 0865 - 471K	470	20	0.796	0.836	0.52

**PKB 0809, ±5% or ±10%**

TFC Part No.	µH @ 1kHz	Q min.	Test Freq. MHz	d.c.r. Ω max.	I d.c. max. mA (+°C)	S.R.F. MHz min.
PKB 0809 - 101J	100	80	0.796	0.52	800	4.5
PKB 0809 - 121J	120	80	0.796	0.52	740	4.2
PKB 0809 - 151J	150	80	0.796	0.62	660	3.8
PKB 0809 - 181J	180	80	0.796	0.82	600	3.3
PKB 0809 - 221J	220	80	0.796	1.0	550	2.9
PKB 0809 - 271J	270	80	0.796	1.2	490	2.6
PKB 0809 - 331J	330	80	0.796	1.5	440	2.3
PKB 0809 - 391J	390	80	0.796	1.8	390	2.0
PKB 0809 - 471J	470	80	0.796	2.0	350	1.8
PKB 0809 - 561J	560	80	0.796	3.0	320	1.7
PKB 0809 - 681J	680	80	0.796	3.0	290	1.6
PKB 0809 - 821J	820	80	0.796	3.3	260	1.4
PKB 0809 - 102J	1,000	90	0.252	3.3	220	1.3
PKB 0809 - 122J	1,200	90	0.252	3.6	200	1.2
PKB 0809 - 152J	1,500	90	0.252	3.9	180	1.1
PKB 0809 - 182J	1,800	90	0.252	5.6	160	1.0
PKB 0809 - 222J	2,200	90	0.252	6.2	140	0.9
PKB 0809 - 272J	2,700	90	0.252	7.5	120	0.8
PKB 0809 - 332J	3,300	90	0.252	8.2	110	0.7
PKB 0809 - 392J	3,900	90	0.252	9.1	100	0.7
PKB 0809 - 472J	4,700	90	0.252	11.0	100	0.6
PKB 0809 - 562J	5,600	90	0.252	15.0	90	0.6
PKB 0809 - 682J	6,800	90	0.252	20.0	80	0.5
PKB 0809 - 822J	8,200	90	0.252	22.0	70	0.5
PKB 0809 - 682J	6,800	90	0.252	20.0	80	0.5
PKB 0809 - 822J	8,200	90	0.252	22.0	70	0.5
PKB 0809 - 103J	10,000	100	0.0796	25.0	65	0.4
PKB 0809 - 123J	12,000	100	0.0796	27.0	60	0.4
PKB 0809 - 153J	15,000	100	0.0796	33.0	56	0.3
PKB 0809 - 183J	18,000	100	0.0796	36.0	52	0.3
PKB 0809 - 223J	22,000	100	0.0796	42.0	48	0.3
PKB 0809 - 273J	27,000	100	0.0796	56.0	45	0.3
PKB 0809 - 333J	33,000	100	0.0796	65.0	42	0.2
PKB 0809 - 363J	36,000	100	0.0796	70.0	40	0.2

**Ordering information**

Type PKB inductors may be ordered using the standard part numbers as follows:

TFC Part No ----- PKB0865 331 K S

PK0865 ----- Type No.

331 ----- Inductance value code

K ----- Tolerance:

----- J = 5%, K = 10%, M = 20%

S ----- Slewing if required