

Type CD75 (10 ~ 470) μ H

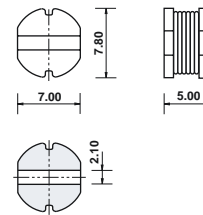
- # Ferrite core
- # High S.R.F.
- # smd mounting
- # Small size

The type CD75 smd inductors provide high inductance and rated d.c. current with small size. They are very high quality components which may be assembled using reflow or wave soldering techniques and supplied packed in bulk or on 12mm tape and reel. Maximum rated current is based on a temp. rise of +40°C and a max. inductance fall to 80% of the original value.

Electrical specification

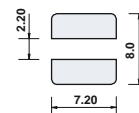
Inductance value	(10 ~ 82) μ H at 2.52MHz, (100 ~ 470) μ H at 1kHz
Core material	Ferrite
Temperature range	(-25 +70)°C
Moisture resistance	H \pm 5% max., Q \pm 10% max., relative humidity 90% ~ 95%, +40°C, 24 hours

Dimensions(mm)



Connections are tinned
Suitable for reflow or wave soldering
Connections viewed from bottom
Core material is ferrite

Suggested land pattern



Marking	Date code, inductance code
Insulation resistance	100M Ω min.
Voltage rating	100Vd.c.
Temperature coefficient	(0 ~ 2000)ppm/°C
Vibration	\pm 2% max. (10 ~ 55)Hz, 1.5mm displacement, three planes, duration 1 hour
Shock	\pm 2% max., three shocks of 100g, each of three planes

TFC Part No.	Inductance Code	Inductance Value	Ω d.c. max.	d.c. current Amps max.	s.r.f. min. MHz
CD75 - 100KC	100K	10 μ H \pm 10%	0.07	2.3	28
CD75 - 120KC	120K	12 μ H \pm 10%	0.08	2.0	23
CD75 - 150KC	150K	15 μ H \pm 10%	0.09	1.8	22
CD75 - 180KC	180K	18 μ H \pm 10%	0.10	1.6	20
CD75 - 220KC	220K	22 μ H \pm 10%	0.11	1.5	17
CD75 - 270KC	270K	27 μ H \pm 10%	0.12	1.3	15
CD75 - 330KC	330K	33 μ H \pm 10%	0.13	1.2	15
CD75 - 390KC	390K	39 μ H \pm 10%	0.16	1.1	14
CD75 - 470KC	470K	47 μ H \pm 10%	0.18	1.1	13
CD75 - 560KC	560K	56 μ H \pm 10%	0.24	0.94	11
CD75 - 680KC	680K	68 μ H \pm 10%	0.28	0.85	11
CD75 - 820KC	820K	82 μ H \pm 10%	0.37	0.78	10
CD75 - 101KC	101K	100 μ H \pm 10%	0.43	0.72	9.2
CD75 - 121KC	121K	120 μ H \pm 10%	0.47	0.66	7.7
CD75 - 151KC	151K	150 μ H \pm 10%	0.64	0.58	6.1
CD75 - 181KC	181K	180 μ H \pm 10%	0.71	0.51	5.8
CD75 - 221KC	221K	220 μ H \pm 10%	0.96	0.49	5.2
CD75 - 271KC	271K	270 μ H \pm 10%	1.11	0.42	4.8
CD75 - 331KC	331K	330 μ H \pm 10%	1.26	0.40	4.3
CD75 - 391KC	391K	390 μ H \pm 10%	1.77	0.36	4.3
CD75 - 471KC	471K	470 μ H \pm 10%	1.96	0.34	3.8