

Type CDR105B (10 ~ 470) μ H

Dimensions(mm)

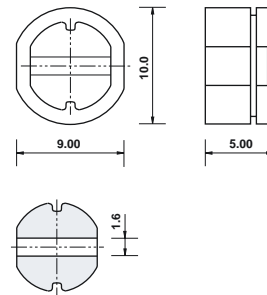
- # Ferrite core
- # Ferrite shielded
- # High S.R.F.
- # smd mounting
- # Miniature size

The type CDR105 smd inductors provide high inductance and rated d.c. current with small size and are ferrite shielded. They are very high quality components which may be assembled using reflow or wave soldering techniques and supplied packed in bulk or on 16mm tape and reel, 500 or 1K pieces per reel. Maximum rated current is based on a temperature rise of +40°C and a maximum inductance fall to 80% of the original value.

Electrical specification

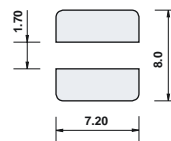
| | |
|----------------------------|--|
| Inductance value | (10 ~ 82) μ H at 2.52MHz (100 ~ 470) μ H at 1kHz |
| Core material | Ferrite |
| Temperature range | (-25 +70)°C |
| Moisture resistance | H \pm 5% max., Q \pm 10% max., relative humidity 90% ~ 95%, +40° C, 24 hours |

| | |
|--------------------------------|---|
| Marking | Date code, inductance code |
| Insulation resistance | 100M Ω min. |
| Voltage rating | 100Vd.c. |
| Temperature coefficient | (0 ~ 2000)ppm/°C |
| Vibration | \pm 2% max., (10 ~ 55)Hz, 1.5mm displacement, duration 1 hour |
| Shock | \pm 2% max., three shocks of 100g, each of three planes |



Connections are tinned
Suitable for reflow or wave soldering
Connections viewed from bottom
Core material is ferrite

Suggested land pattern



| TFC Part No. | Inductance Code | Value | Ω d.c. max. | d.c. current Amps max. | s.r.f. min. MHz |
|-----------------|-----------------|-----------------------|--------------------|------------------------|-----------------|
| CDR105B - 100MC | 100M | 10 μ H +20% -15% | 0.06 | 2.53 | 31 |
| CDR105B - 120MC | 120M | 12 μ H +20% -15% | 0.06 | 2.31 | 27 |
| CDR105B - 150MC | 150M | 15 μ H +20% -15% | 0.07 | 2.06 | 27 |
| CDR105B - 180MC | 180M | 18 μ H +20% -15% | 0.08 | 1.89 | 26 |
| CDR105B - 220MC | 220M | 22 μ H +20% -15% | 0.09 | 1.71 | 21 |
| CDR105B - 270MC | 270M | 27 μ H +20% -15% | 0.11 | 1.54 | 18 |
| CDR105B - 330MC | 330M | 33 μ H +20% -15% | 0.12 | 1.39 | 16 |
| CDR105B - 390MC | 390M | 39 μ H +20% -15% | 0.16 | 1.28 | 15 |
| CDR105B - 470MC | 470M | 47 μ H +20% -15% | 0.18 | 1.17 | 14 |
| CDR105B - 560MC | 560M | 56 μ H +20% -15% | 0.19 | 1.07 | 12 |
| CDR105B - 680MC | 680M | 68 μ H +20% -15% | 0.22 | 0.97 | 11 |
| CDR105B - 820MC | 820M | 82 μ H +20% -15% | 0.28 | 0.88 | 10 |
| CDR105B - 101MC | 101M | 100 μ H +20% -15% | 0.35 | 0.80 | 7 |
| CDR105B - 121MC | 121M | 120 μ H +20% -15% | 0.38 | 0.73 | 6.5 |
| CDR105B - 151MC | 151M | 150 μ H +20% -15% | 0.45 | 0.65 | 5.8 |
| CDR105B - 181MC | 181M | 180 μ H +20% -15% | 0.62 | 0.60 | 5.3 |
| CDR105B - 221MC | 221M | 220 μ H +20% -15% | 0.69 | 0.54 | 5.2 |
| CDR105B - 271MC | 271M | 270 μ H +20% -15% | 0.78 | 0.49 | 4.6 |
| CDR105B - 331MC | 331M | 330 μ H +20% -15% | 1.03 | 0.44 | 4.2 |
| CDR105B - 391MC | 391M | 390 μ H +20% -15% | 1.18 | 0.41 | 3.6 |
| CDR105B - 471MC | 471M | 470 μ H +20% -15% | 1.60 | 0.37 | 3.6 |